

MASSACHUSETTS HORTICULTURAL SOCIETY'S GARDEN AT ELM BANK

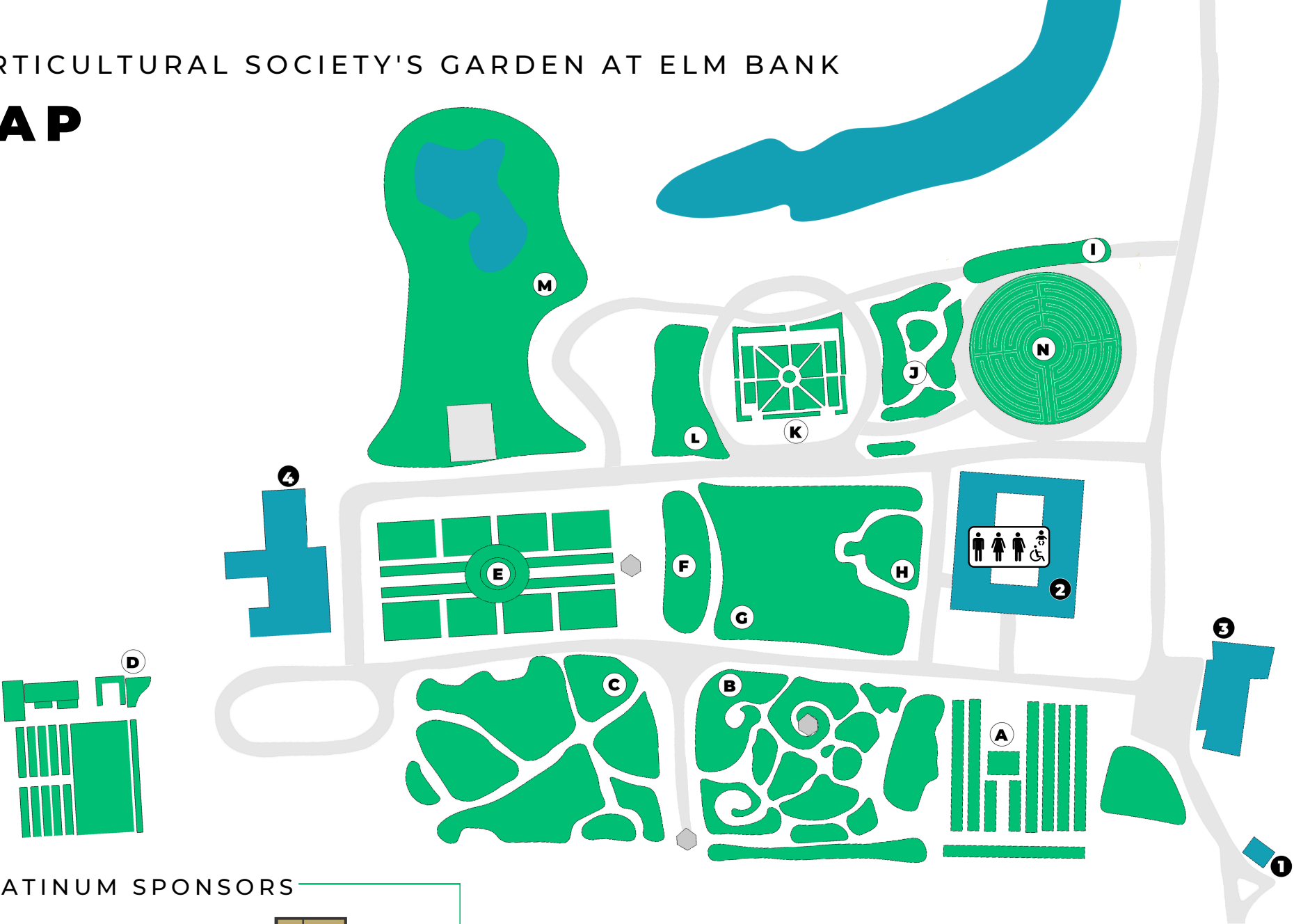
GARDEN MAP

GARDEN AREAS

- A Trial Garden
- B Weezie's Garden for Children
- C Bressingham Garden
- D Seed to Table Vegetable Garden
- E Italianate Garden
- F Goddess Garden
- G Maple Grove
- H Jim Crockett Memorial Garden
- I Daylily Garden
- J Rhododendron Garden
- K Herb Garden
- L Noanett Native Plant Garden
- M Olmsted Asian Garden
- N Labyrinth

BUILDINGS

- 1 Gatehouse
- 2 Education Center
- 3 Hunnewell Building
- 4 Manor House



PLATINUM SPONSORS



BARTLETT
TREE EXPERTS
SCIENTIFIC TREE CARE SINCE 1907



R. P. MARZILLI
LANDSCAPE PROFESSIONALS

GOLD SPONSORS

CJC Lighting & Production



GORDON'S
EST. 1934

THE GARDEN AT ELM BANK | 900 WASHINGTON STREET, WELLESLEY, MA 02482

The Garden at Elm Bank

Mon-Thurs 10am-7pm | Fri-Sun 10am-5pm

A. Trial Garden

The first garden installed by MHS; it is one of three trial gardens in New England, and tests new and unreleased varieties of annuals and perennials, as well as heirloom vegetables. Plants under trial are grown beside similar, established varieties and are judged based on suitability for growing in zones 5 and 6.

B. Weezie's Garden for Children

Designed by Julie Messervy, this layout highlights small 'rooms' in one large space, created to engage the senses and spark imagination. Rooms include a pollinator garden, backyard wildlife garden, and more. A highlight of this garden is the misting water feature surrounded by colorful stones. These stones are petrified wood, a form of fossil, which ties into the prehistoric plants and Ginkgo tree growing near-by.

C. Bressingham Garden

Added in 2007 and designed by plantsman Adrian Bloom of Bressingham, England, this garden was installed in two days by more than 200 volunteers. It is a four-season garden that uses 'mass planting' techniques to create visual impact. Island beds full of perennials and trees create functional and beautiful residential landscape example.



SCAN TO LEARN
MORE ABOUT MHS
& GET INVOLVED

D. Seed to Table Vegetable Garden

This garden was established with the purpose to help people learn about growing their own food. From raised beds to potted containers, this garden showcases different ways home gardeners can find success.

E. Italianate Garden

This garden was designed by Percival Gallagher of the Olmsted Firm and functioned as a room of the Manor house with its tall, hedged walls. The Camperdown elms (trees nearest the house) are grafted trees and original to Gallagher's design. The fountain is a 14th century Spanish baptismal font, purchased by Alice Cheney-Baltzell on her honeymoon.

F. Goddess Garden

These statues are the Roman goddesses Flora, Ceres, and Pomona. They were originally installed on the façade of the 2nd Horticulture Hall in Boston. In 2020 these goddesses received a much needed cleaning and restoration. See their full story on our website.

G. Maple Grove

In between the Jim Crockett Memorial Garden and the Goddess Garden sits Maple Grove, a large lawn area fit for concerts, picnics, events, and our Garden Tails Story Time.

H. Jim Crockett Memorial Garden

This relaxing area is a favorite for picnics and catching up with friends. Dedicated to honor Jim Crockett (of PBS's 'The Victory Garden'). Crockett was a member of Alpha Tau Gamma fraternity at Mass Stockbridge School who donated this perennial shade garden.

I. Daylily Garden

This garden features more than 100 varieties of heirloom daylilies. Visit in early summer for a sea of blooms.

J. Rhododendron Garden

Planted here are unusual small-leaved varieties of rhododendron and varieties that can grow in full sun. Find shade varieties near the garden entrance. Visit in spring for optimum blooms.

K. Herb Garden

Planted like a clock, each wedge has a theme highlighting the herb's use or history. This garden is used for many adult and youth education programs.

L. Noanett Garden Club Historic Daffodil and Native Plant Garden

This garden space has evolved from a mostly grass and daffodil garden, to now include a wide variety of native plant species. It is a vital teaching space and a designated Pollinator Pathway.

M. Olmsted Asian Garden

This garden was part of Olmsted's original 1907 design, and is currently under restoration. A handful of trees in this area are original to the design, along with the slate pavers you will find circling the pond.

N. Labyrinth

Labyrinths have been a tool for mindfulness throughout generations, helping you clear your mind and appreciate nature as you slowly and thoughtfully follow the continuous path to the center. Introduced in November 2023, the labyrinth is an adaptation of an ancient design called the 8-ring Chartres.



**MASSACHUSETTS
HORTICULTURAL
SOCIETY**

THE GARDEN AT ELM BANK

..... M E M B E R S H I P
Join MHS today for discounts on events,
classes, & workshops. Plus, *free garden
admission* all season long!
BECOME A MEMBER AT THE GATEHOUSE TODAY